

# CORE — C S300 — 250 — 50 — DT



## Product Spec

CS300: 300mm Socket (Standard)  
 CS180: 180mm Socket  
 CS400: 400mm Socket  
 CTU: Pendant  
 CNA: Flood-Style  
 CFR: Eye bolt - Style

## Product Type

250: 250 Type  
 400: 400 Type  
 700: 700 Type  
 1000: 1000 Type

## Colour Temperature

50: 5000K (Standard)  
 40: 4000K  
 30: 3000K  
 24: 2400K

## Lens Type

DT: Transparent lens  
 DK: Glare lens  
 HT: 80 degree lens  
 ST: 50 degree lens



TIS 1955-2551

## LAMP SPECIFICATIONS

MODEL	High-bay LED250 CORE	High-bay LED400 CORE	High-bay LED700 CORE	High-bay LED1000 CORE	
Power Consumption	50W	87W	135W	260W	
Luminous	Transparent	7910lm / 158.2lm/W	13841lm / 159.1lm/W	22075lm / 163.5lm/W	42565lm / 163.7lm/W
	Glare	7130lm / 142.6lm/W	12580lm / 144.6lm/W	19278lm / 142.8lm/W	36426lm / 140.1lm/W
Colour Rendering Index (CRI)	Ra70	Ra70	Ra70	Ra70	
Beam Angle	115°	115°/80°	115°/80°	115°/50°	
Operating Temperature	-30°C~+60°C	-30°C~+60°C	-30°C~+60°C	-30°C~+60°C	
Colour Temperature	5000K/4000K/3000K/2400K	5000K/4000K/3000K/2400K	5000K/4000K/3000K/2400K	5000K/4000K/3000K/2400K	
Life Span (70% Lumen maintenance)	60000h	60000h	60000h	60000h	
IP Rating	IP65/IP67	IP65/IP67	IP65/IP67	IP65/IP67	
Warranty	5 years	5 years	5 years	5 years	

※ Operating temperature are the range in nstallation environment that does not interfere with the heat radiation

※ Specification updated in Jul 2016. Product specification may change without prior notice

## DRIVER SPECIFICATIONS

High-bayLED CORE				
Product name	50Driver	90 Driver	150Driver	280 Driver
Model name	NSP250-50	NSP400-90	NSP700-150	NSP1000-280
Constant AC Supply	AC100V/200V/220V	AC100V/200V/220V	AC100V/200V/220V	AC100V/200V/220V
Dimension	75mm×44mm×189mm	75mm×44mm×243mm	75mm×44mm×243mm	98mm×44mm×235mm
Weight	1100g	1400g	1450g	1950g
Input Voltage	AC100V~AC240V	AC100V~AC254V	AC100V~AC254V	AC100V~AC254V
Frequency	50Hz/60Hz	50Hz/60Hz	50Hz/60Hz	50Hz/60Hz
Input Current	0.50A(100V) 0.25A(200V)	0.90A(100V) 0.45A(200V)	1.50A(100V) 0.75A(200V)	2.80A(100V) 1.40A(200V)
Output Voltage	DC42V	DC42V	DC42V	DC150V
IP Rating	IP67	IP67	IP67	IP67
Power Efficiency	100V:99%/200V:98%	100V:99%/200V:98%	100V:99%/200V:98%	100V:99%/200V:98%

※ Specification updated in Jul 2016. Product specification may change without prior notice



# NEW RELEASE

CLAIR HIGH-BAY LED

# CORE

SERIES



<http://led-clair.jp>

## CS Style

SOCKET Style (E39)

250 CORE

400 CORE

700 CORE

※ Do not have 1000 Type Socket



CS300-250-50DT  
700g (Lamp body)



CS300-400-50DT  
1030g (Lamp body)



CS300-700-50DT  
1560g (Lamp body)

※ Required using included fall prevention wire  
※ There are 180mm/300mm/400mm socket  
※ In case of replacement an existing lighting, please remove existing reflector

## CTU Style

PENDANT Style

250 CORE

400 CORE

700 CORE

1000 CORE



CTU-250-50DT  
2780 g (Arm & Driver combined)



CTU-400-50DT  
2940 g (Arm & Driver combined)



CTU-700-50DT  
3520 g (Arm & Driver combined)



CTU-1000-50DT  
6230 g (Arm & Driver combined)

## CNA Style

FLOOD Style

250 CORE

400 CORE

700 CORE

1000 CORE



CNA-250-50DK  
2920g(Arm & Driver combined)



CNA-400-50DK  
3260g(Arm & Driver combined)



CNA-700-50DK  
3840g(Arm & Driver combined)



CNA-1000-50DK  
7560g (Arm & Driver combined)

## CFR Style

EYE BOLT Style

250 CORE

400 CORE

700 CORE

1000 CORE

φ 164mm

φ 224mm

φ 299mm

φ 430mm



CFR-250-50DK  
650g (Lamp body)



CFR-400-50DK  
980g (Lamp body)



CFR-700-50DK  
1510g (Lamp body)



CFR-1000-50DK  
3220 g (Lamp body)

※ Required using included fall prevention wire ※ Chain sold separately

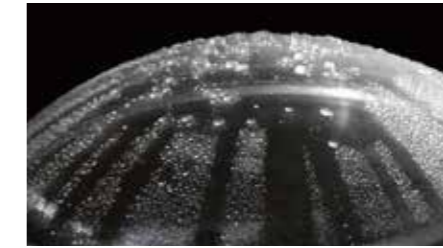
## Various Options

### Colour Temperature



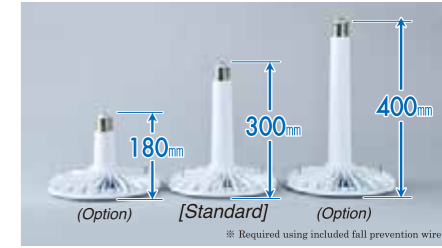
\*Pre-order required beside 5000K

### Lens Coating



Water/ Oil repellent, anti-fouling

### Sockets



※ Required using included fall prevention wire

### Lens

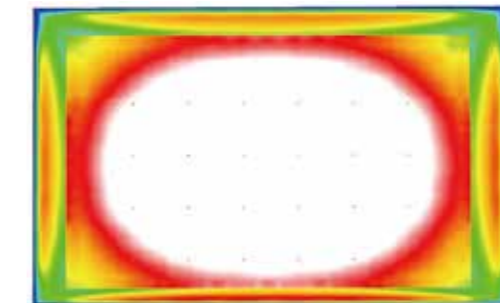


### Socket Shade



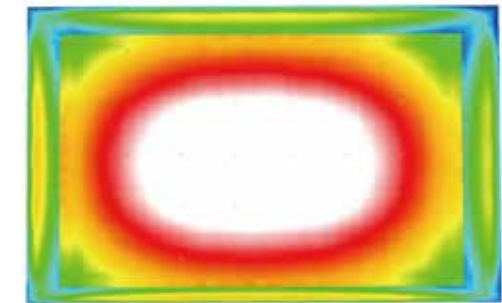
## Illuminance Simulation

### 700 Type Transparent lens (40 sets)



Surface	p[%]	E <sub>av</sub> [lx]	E <sub>min</sub> [lx]	E <sub>max</sub> [lx]
Workplane	/	972	551	1259
Floor	20	933	544	1199
Ceiling	70	289	182	54880
Walls (4)	50	578	248	816

### 700 Type Glare lens (40 sets)



Surface	p[%]	E <sub>av</sub> [lx]	E <sub>min</sub> [lx]	E <sub>max</sub> [lx]
Workplane	/	817	453	1057
Floor	20	785	458	1008
Ceiling	70	273	178	43674
Walls (4)	50	496	302	672

## Mounting Guide

### By HID Lamp

### Substitute Product Guide

High-bayLED [CORE]	Existing HID Lamp			
250(46W)	Self-Ballasted 300W [BHRF300W]	Mercury 250W [HF250X]	Metal Halide 200W [MF200]	High-pressure Sodium 180W [NH180]
400(87W)	Self-Ballasted 500W [BHRF500W]	Mercury 400W [HF400X]	Metal Halide 250W/300W [MF250/MF300]	High-pressure Sodium 220W [NH220]
700(135W)		Mercury 700W [HF700X]	Metal Halide 400W [MF400]	High-pressure Sodium 360W [NH360]
1000(260W)		Mercury 1000W [HF1000X]	Metal Halide 700W [MF700]	High-pressure Sodium 660W [NH660]

### (Indoor) By Ceiling Height

Ceiling height	High-bayLED [CORE]
H:~3m	250 Glare
H:3m~5m	250 Transparent 400 Glare
H:5m~9m	400 Transparent 700 Glare
H:9m~15m	700 Transparent 1000 Glare
H:15m~	1000 Transparent

### (Outdoor) By Mounting Height

Mounting height	High-bayLED [CORE]
H:~5m	250 Glare 400 Glare
H:5m~10m	400 Transparent 700 Glare 1000 Glare
H:10m~20m	700 Transparent 1000 Transparent